

**New Mexico DOT
SHSP Interagency Working Groups (IAWG)**
Meeting 5 – Road/Lane Departure Part 2
June 18, 2025



Housekeeping notes

- Meeting is being recorded
- Please keep yourself on mute when not speaking to avoid background noise
- Video off unless speaking
- The meeting is expected to take 90 minutes; time for questions in the middle and end
- Chat is being monitored for questions
- Joining from a different Zoom account → message Richard
- Tech issues: please direct message Richard Perce in the Zoom chat or you can email at richard@anthropop.com

2

Agenda (90 min)

Housekeeping (3 min)

Recap from June 11th (3 min)

Mural goals and reminders (3 min)

Safe System Design Hierarchy (3 min)

Breakout discussions (50 min)

Mural feedback (5 min)

Next steps (5 min)

Q&A (18 min)

Recap from June 11th meeting

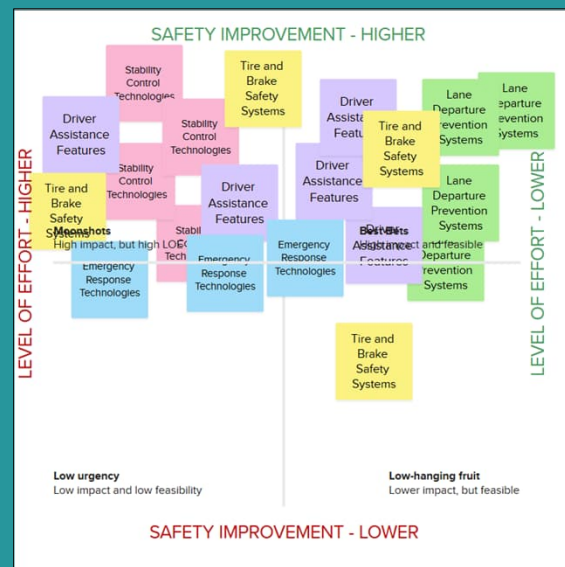
4






Mural activity: June 11th - Road/Lane Departure Part 1

Scoring assigned to the 4 quadrants of the scoring grid from the March 11th meeting:

- Best bet – x2
- Low hanging fruit – x1
- Moonshots – x0.5
- Low Urgency - x0

→Weighed Offset → Take top 4 strategies to propose implementation countermeasures for today's meeting



<p>EMPHASIS AREA: ROAD/LANE DEPARTURE</p> <p>STRATEGY</p>	
 <p>SAFER ROADS</p>	<ul style="list-style-type: none"> <input type="checkbox"/> Signing and Delineation <input type="checkbox"/> Roadside Safety Treatments <input type="checkbox"/> Install Systems for Inclement Weather Concerns <input type="checkbox"/> Lighting and Visibility <input type="checkbox"/> Integrated Roadway Departure Prevention Strategy
 <p>SAFER ROAD USERS</p>	<ul style="list-style-type: none"> <input type="checkbox"/> Comprehensive Rural Road Safety and Run-Off-Road Prevention Program <input type="checkbox"/> High-Risk Driver Interventions <input type="checkbox"/> Impaired and Distracted Driving Prevention
 <p>SAFE SPEEDS</p>	<ul style="list-style-type: none"> <input type="checkbox"/> Curve Speed Management <input type="checkbox"/> High-Risk Location Speed Management <input type="checkbox"/> Reduce Vehicle Speeds <input type="checkbox"/> Integrated Speed and Infrastructure Design
 <p>SAFE VEHICLES</p>	<ul style="list-style-type: none"> <input type="checkbox"/> Lane Departure Prevention Systems <input type="checkbox"/> Driver Assistance Features <input type="checkbox"/> Tire and Brake Safety Systems <input type="checkbox"/> Emergency Response Technologies
 <p>POST-CRASH CARE</p>	<ul style="list-style-type: none"> <input type="checkbox"/> Scene Management and Access <input type="checkbox"/> Quick Clearance Protocols <input type="checkbox"/> First Responder Training <input type="checkbox"/> Rural Emergency Response Strategies

Mural Goals

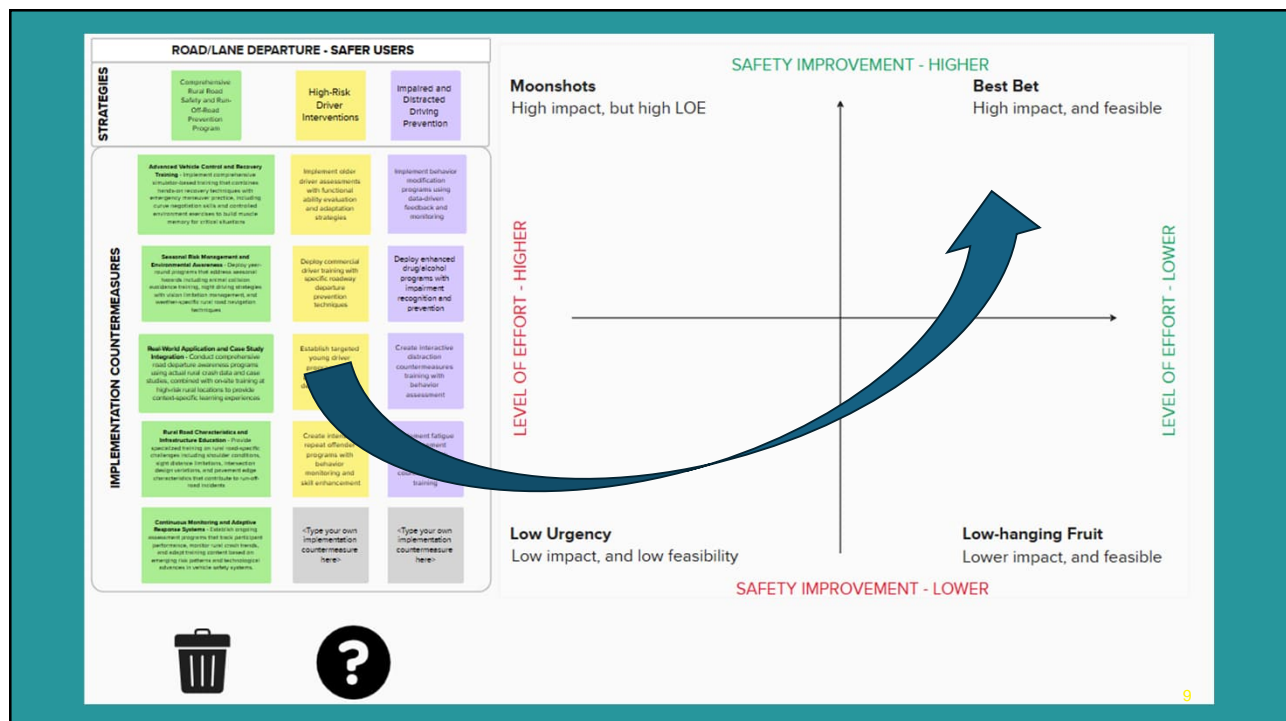
- Road/Lane Departure Part 1
 - Strategies
- Road/Lane Departure Part 2
 - Implementation Countermeasures
- High safety improvement + low LOE = more desirable
- Highlight the best in the SHSP

7

Strategy vs. Implementation Countermeasures

Roadway Departure EA		
SSA	Strategies/Mindset/Idea	CM/Policy/Program to reduce KA crashes
Safe Speeds	Curve Speed Management	<ol style="list-style-type: none"> 1 Install advisory speed systems with curve geometry and roadway condition detection technology 2 Deploy dynamic warning signs with real-time speed and weather condition integration 3 Implement speed feedback displays with data collection and violation pattern analysis 4 Install automated enforcement systems with high-resolution detection and violation documentation
	High-Risk Location Speed Management	<ol style="list-style-type: none"> 1 Implement data-driven enforcement using crash history and risk factor analysis 2 Deploy site-specific countermeasures based on detailed safety assessments and crash patterns 3 Conduct comprehensive speed zone reviews using engineering and crash data analysis 4 Install traffic calming measures with verified speed reduction effectiveness
	Reduce Vehicle Speeds	<ol style="list-style-type: none"> 1 Construct self-enforcing roadways with narrower lanes, speed humps, chicanes, dynamic speed feedback signs, road diets, speed tables, etc. 2 Implement behavioral campaigns that reduce vehicle speeds like public education advertisements and enforcement campaigns 3 Conduct comprehensive review of speed limit setting policies and statutes 4 Evaluate legislative changes needed to prioritize safety in speed limit determination 5 Implement context-sensitive speed limit methodologies based on road function and safety data
	Integrated Speed and Infrastructure Design	<ol style="list-style-type: none"> 1 Develop design standards that balance infrastructure safety with speed management 2 Implement self-enforcing design elements (narrow lanes, visual cues) on wider shoulder roads 3 Create speed transition zones when moving from high-design to lower-design road sections 4 Use targeted speed enforcement on high-design roads with crash history

8



Safe System Approach

Safe System Design Hierarchy

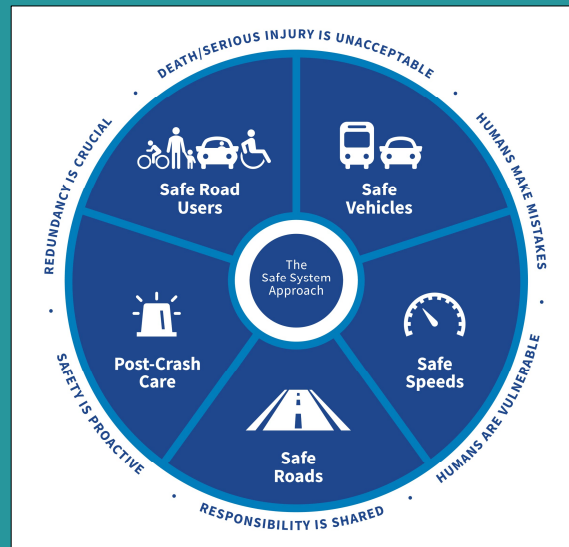
10

Safe System Approach

PRINCIPLES OF A SAFE SYSTEM APPROACH (SSA)

- Death and serious injuries are unacceptable
- Humans make mistakes
- Humans are vulnerable
- Responsibility is shared
- Safety is proactive
- Redundancy is crucial

NEW → Safe System Design Hierarchy



11



Head to your breakout rooms!

See you at 3:02pm



Facilitator will insert Mural link in each breakout room for attendees to access the Mural.

13

Review of Mural Activity

- What could have been done better?
- What would you change?
- What did you like? Dislike?
- 50 minutes → Enough for ~85 implementation countermeasures?



14

Homework + Next steps

- Share recommendations with the project team
- Share the project website with your networks (<https://newmexicodotshsp.com/>)
- Propose future meeting topics
- Recruit more IAWG members – direct them to the website!
- Support implementation of strategies
- Review and provide input on upcoming deliverables

Dates

- Tuesday, July 1st
 - Next IAWG meeting: Intersection-Related Part 1
- Wednesday, July 2nd
 - Last call for input on Road/Lane Departure strategies
 - Last call for input on Road/Lane Departure implementation countermeasures

15

Questions?

Contact info

Jason Coffey – jason.coffey@dot.nm.gov

Tommy Myszka, PE, RSP1 – tommy.myszka@jacobs.com

16